

OUTBOARDER

READERSHIP 6000

WWW.OBC.CO.NZ

FEBRUARY 2023

Scrambling for sweets under a brilliant blue sky at the 2022 OBC Kids Christmas Party.



Festive Fun

By Jess Shears

The 2022 OBC Kids Christmas Party was a huge success, with a great turn-out of children and families. How great? Try 140-plus children ready to enjoy an afternoon filled with festive fun.

The weather was perfect, not too hot, and dry with a gentle breeze. Everyone was able to have their picnics - which included a supplied packed lunch for each of the registered kids - on the reserve whilst jumping to and from the activities and entertainment.

All of the activities were a huge hit: bouncy castles, Little Bo Peep's Mobile Farm, pony rides, balloon twisters, face painters and a brilliant show from



Santa was kept very busy handing out gifts to more than 140 registered children!

...Continued on page 4

CLUB OFFICERS

PATRON:

Hon. Peter Salmon, CNZM, KC

COMMODORE:

Phil Allen.....021 616 382

VICE COMMODORE:

Greg Batkin.....021 673 739

CLUB CAPTAIN:

Kevin Best.....021 439 873

VICE CLUB CAPTAIN:

Brian Hughes.....0274 453 249

SECRETARY:

Bill McGarry.....027 479 0162

TREASURER:

Alan Tong.....027 498 9966

EXECUTIVE COMMITTEE:

Harvey Brookes.....021 913 418

John Cochrane.....021 400 364

Frank Davis.....021 685 571

Karen Foley.....021 998 086

Paul Miller.....021 392 236

Martin Urban.....021 145 0236

ALL DEPARTMENTS:

Maintenance, membership, security,
events, clubhouse..... 522 0774

Email:.....membership@obc.co.nz

Fax.....522 0774

PO Box 42056, Orakei, Akld.

Website:.....www.obc.co.nz

OUTBOARDER ADVERTISING:

Shirley Haslam..... Ph:263 5305

Email:.....shirley@petrolhead.co.nz

EDITORIAL CONTRIBUTIONS:

Debbie Jarvis, Advance Publishing

PO Box 76-503, Manukau City,

Auckland

Email:.....debbie@petrolhead.co.nz

The Outboarder is published for the Outboard Boating Club of Auckland (Inc.). The views expressed herein are not necessarily those of the publisher, editor or club executive, all of whom disclaim responsibility unless otherwise indicated. Outboarder is registered at the G.P.O. Wellington as a magazine.

COMMODORE'S REPORT

We're well into the new year, but happy New Year from the Executive and myself. I hope you were able to have a good break.

As I key this on January 5, in the 'sunny' Bay of Islands we are pretty cosy, tucked up in Entico Bay looking out to swirling drizzle, checking Coastguard's NowCasting which reports average 30, gusting 40 on Okahu Island. At least that's down from the 40 gusting 50 of the past two days. While disappointing in the moment, we were fortunate to get to the BOI before Christmas and Santa Claus was good enough to make a detour and land in the cockpit for the grandkids. The weather through to New Year was stunning.

I'd love to be able to comment on the fishing in the BOI but those who know me know that I don't fish and we don't fish from the good ship Corniche. As a concession, my son-in-law is allowed to fish from our 4m Pelin tender and we have had some good fish meals and sashimi.

Life around the Club leading up to Christmas was very much business as usual. Some of the few fine days were not as busy as could have been expected - I guess pre-Christmas parties took precedence.

The Kids Christmas Party was well attended and enjoyed by all. Santa was generous with his gifts for the youngsters.

After a long planning period, the marina refurbishment programme got underway in December on E Pier, replacing badly corroded corner and pile guide brackets with 316 stainless fabrications, checking tie rods and electrical bollards. F pier will be well underway by the time you're reading this.

All the best for the coming year.

- Phil Allen

FFC '23 NEEDS YOU!

The OBC's annual Family Fishing Competition is the Club's biggest event of the year, and a fantastic opportunity to get your company's name and products or services in front of Club members, friends and potentially even those driving past the OBC in the lead up to the event.

We invite you to get involved by way of sponsorship - product, services, experiences or perhaps something else? All sponsorship is welcome, it does not need to be boating or fishing related.

Whether you can provide a significant item for a major prize; smaller items suitable for the 'boat bags' or minor prize categories; and even cash, which will allow us to



purchase additional prizes; your company's involvement will be acknowledged multiple times - including in the weeks prior as well as on the day of the competition.

Should you have a flag or banner suitable to be displayed in conjunction with the Family Fishing Competition, that can also be arranged.

Not in a position to sponsor the event, but still want to be a part of this fabulous family day? Then why not volunteer? There's no shortage of tasks to be undertaken, and while you will be busy, you'll also have lots of fun and meet some great people.

To discover more about the 2023 OBC and Marine Works Family Fishing Competition, and what the event can offer you as a sponsor or volunteer, please contact Jess, by email to events@obc.co.nz or phone 522 0774.

FRIDAY FAVOURITE

From FFC to FnC - Fish 'n' Chips that is! The kiwi Friday night fish 'n' chips tradition has come to the OBC. It started at the end of January, and will continue on the last Friday of the month in February (24th) and March (31st). We'll be serving up a tasty feed of fish 'n' chips from 5.30pm to 7.30pm, and at just \$8 per portion, it's a great deal to satisfy the family!

The bar will also be open, so come one, come all, and if the support is there we'll look at continuing the Friday night feed-up beyond the summer months.



Check out marinemate.co.nz for a free New Zealand app full of useful info.

**SMART
MARINE**
BOATING FISHING OUTDOORS

5 GREAT STORES

Manukau - 85 Cavendish Dr
Mt. Wellington - 72 Lunn Ave
Glenfield - 128 Target Rd
Hamilton - 3 Maui St
Tauranga - 36 Kereiti St

Get social   SmartMarineNZ

0800 80 50 40

Shop online at

www.smartmarine.co.nz



Who's been naughty and who's been nice? Everyone was nice of course!

...Continued from page 1

Le Cirque de JP. JP's appearances at this event are super popular as he presents a magic show that children and their parents can relate to.

A big thanks to OBC Club member Graham Dick who kept everyone organised and on time, doing an excellent job as EmCee/host for the day, and running a very well-coordinated lolly scramble for all ages to enjoy.

The main man himself - aka Santa - arrived in a rather cool fire truck, which member Peter Goodwin had arranged. Despite his long journey from the North Pole, Santa very kindly handed out a mountainous pile of gifts. There was a great selection of toys for all the registered children, who ranged in age from near-newborn to 10-years. Thanks go to Toy World Manukau staff who assisted with shopping and wrapping all the gifts.

The event was such a success thanks to our fabulous volunteers who were amazing helpers, co-ordinating, serving and entertaining all attendees. We're already looking forward to this year's party!

OBC AUSTRALAND

☆☆☆

OBC PRESENTS

QUIZ
Night

AND PIZZA

THURSDAY
9TH
FEBRUARY

Believe It or Not!

'MULTI-MEDIA'
ALL ON THE BIG SCREEN

TEAMS OF UP TO SIX PEOPLE
\$15 PER PERSON

Prizes for the winning team, runner up & best man standing!

CASH BAR (OPENS 6:30PM) NIBBLES & PIZZA PROVIDED

Members and friends welcome! - There must be at least one OBC member on your team

Register your team to events@obc.co.nz by Wednesday 8th February, 2023
Deposit entry fee to OBC Bank Account: ANZ 06-0101-0072409-00



JP gets the youngsters involved with his Le Cirque de JP show.



Facepainting and some Christmas-themed accessories added to the day's fun.



Little Bo Peep's Mobile Farm always attracts a crowd.



EmCee Graham Dick welcomed Santa to the OBC.



The ever-popular pony rides were also back for 2022.

BOOK YOUR SERVICE NOW!
FREE PICK-UP AND DELIVERY
FOR OBC MEMBERS

2-425hp



YAMAHA
Revs Your Heart®

BUY THE WORLD'S MOST POPULAR OUTBOARD
SALES - SERVICE - SPARES





Full workshop or onsite service



Ovlov Marine Ltd

www.ovlov.co.nz

Auckland City
 Ph: +64 9 377 4285
 142 Beaumont Street,
 Westhaven

Pine Harbour
 Ph: +64 9 536 5249
 9/190 Jack Lachlan Drive
 Pine Harbour Marina



40
 YEARS
Ovlov Marine Ltd

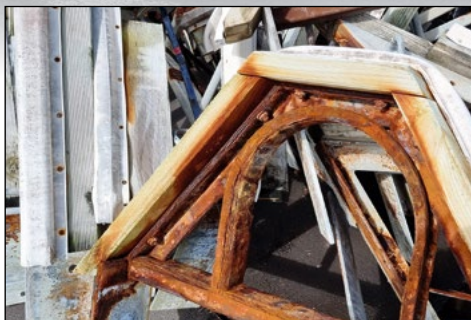
New aluminium pier ramps ready to be installed on B, C and D.



WORK RAMPING UP

MARINA REFURBISHMENT

Work got underway in December with the beginning of the Marina refurbishment. Piers E and F have had all the corner brackets, which hold the fingers to the pier, replaced with new stainless-steel brackets. All the pile guides that hold the outside end of the finger in position have also been replaced. Some brackets and guides were in dire



Some of the badly rusted brackets and guides that were removed from piers E and F.

**RESIDENTIAL AND COMMERCIAL
NZ REGISTERED ELECTRICIANS**

OBC'S PREFERRED ELECTRICIANS



CALL FOR 24HR SERVICE

PHONE (09) 579 6315

LEON - 021 781 445



admin@slipperelectrical.co.nz

WWW.SLIPPERELECTRICAL.CO.NZ

need of replacement and the new stainless-steel fittings should provide a long-term basis to the maintenance of the Marina into the future.

We plan to continue the refurbishment work this current year with piers G and B to have the same work carried out on them.

We have also purchased three new aluminium pier ramps to replace the three old steel ones that were quickly deteriorating on B, C and D. These were the original ramps installed as part of the first stage of the Marina build in 1994. The new ramps will be installed over the next couple of months.

EASTERN RAMPS

Ongoing maintenance continues on the eastern ramps. The first phase of the refurbishment programme is getting

close to being finished. Over the past 18 months we have carried out work to rebuild and extend the two middle fingers, by demolishing the old and rebuilding new buttresses 6m further up the ramps to ensure all-tide access to the ramps. This has been done by cannibalising the first finger closest to H pier to provide the additional 6m lengths of pontoon required. New stainless steel hinges have replaced the old galvanised ones that were badly rusted.

The first finger has also had its buttress moved up the ramp and the new pontoons are at last ready to be installed early in January. This should be wider and will float higher than the current pontoons, and should suit the larger trailer boats we are now starting to see at the Club.

THE WATERFRONT

It looks like it will be another year of nightmare congestion along the waterfront, with work currently underway on three projects at once. The new footpath (not done when they spent a year doing the new cycle way), a new Ngapipi Road footbridge to complement the new footpath, and the work being carried out on the rail tracks from the port to Lilliputt.

Please take extra care over the summer months when turning in and out of the Club, particularly during the week as the rolling road restrictions are causing havoc with the flow of traffic.

Particular care also needs to be taken when crossing the footpath, as there are more pedestrians and cyclists due to them not having easy access to the seaward side. We have already had an accident outside the Club involving a parked truck and a car, with the driver of the car being taken to hospital by ambulance. So please indicate early when approaching the Club with the intent to turn in, and as mentioned, do a double-check for pedestrians and cyclists on the footpath before making the turn into the Club driveway.

NEED A NEW LIFEJACKET?

The NZ Search and Rescue Council, Maritime NZ, and the Safer Boating Forum recently joined forces to commission Consumer NZ to conduct a rigorous, independent review of lifejackets and PFDs. Consumer NZ assessed 16 different models and the results (free to view) can be found here: <https://www.consumer.org.nz/articles/lifejackets-and-pfds/buying-guide>

The Consumer NZ team was also tasked with assessing rescue beacons. Those results can be found at: <https://www.consumer.org.nz/articles/emergency-alerting-devices/buying-guide>



BOATSPRAY half moon bay

anti-foul | prop speed
touch-ups | repaints
cut and polish | varnish
insurance specialists
project management

hardstand, 22m shed or mobile

(09) 535-4802

www.boatspray.co.nz

PUT YOURSELF IN THE PICTURE

It's a new year, and a new chance to win a prize in the 'Reading Outboarder Where' photo competition.

Harvey Brookes, our newest Executive Committee member, is off running, having submitted the first entry for 2023. Harvey managed to enjoy his copy of the Outboarder on one of Auckland's rare sunny days, while at Kawau Island (and we're assured that no Coastguard assistance was required... this time!).

Wondering how you can get involved? It's easy! First make sure you have an Outboarder magazine with you when you travel or visit somewhere - interesting, cool, or unusual spots are definitely a bonus. Then, get a photo taken of you reading the Outboarder with that interesting, cool or unusual spot in the background. Finally, send your pic (high resolution please) by email to events@obc.co.nz, drop/mail prints to the Club, and/or upload and correctly tag the OBC (#OBCAuckland) on your Facebook or Instagram pages. Photos will be posted on OBC social media, and selected images will also appear in the Outboarder magazine during the course of the competition. The competition closes on December 31, 2023. Congratulations to our three 2022 competition winners. First place, Peter Meadowcroft - \$100 Burnsco voucher;

second place, Stuart Cunningham - \$50 Burnsco voucher; third place, Frank Davis - \$50 Burnsco voucher. We had a lot of photos taken in a lot of neat places, making it hard, but fun, to pick our winners.



Harvey Brookes reckoned a sunny day at Kawau Island was a perfect time to catch up with his Outboarder reading.



A \$50 Burnsco voucher went to second-place-getter Stuart Cunningham for this shot taken on the Serengeti.



This shot, taken at Delphi, Greece, won Peter Meadowcroft the \$100 Burnsco voucher first prize.



JEANNEAU

GREAT WEEKENDER



JEANNEAU MERRY FISHER 695 SERIES 2

A True Family Cruiser

The Merry Fisher 695 Series 2 is a safe and trailable boat, ideal for coastal cruising with friends and family. With her stable and generously-sized, tapered V-shape hull, the 695 delivers excellent performance, low maintenance, and low fuel consumption.

Contact Orakei Marine for more information.



ORAKEI
MARINE



09 524 8444



sales@orakeimarine.co.nz



orakeimarine.co.nz

Jeanneau Merry Fisher

605 | 695 | 795 | 895 | 1095 | 1095 FLY | 1295 FLY

ŌKAHU BAY MUSSEL BEDS ONE YEAR ON:

Life returning

From Peter Miles

If you're an avid Outboarder magazine reader (as I'm sure you are!), you'll already know about Revive Our Gulf (ROG), the mussel reef restoration project for the Hauraki Gulf. The OBC has a long association with the project, originally through John Laurence. Past Secretary and life member of the OBC, John is a co-founder of ROG.

In November 2022, working with Ngāti Whātua Ōrākei, ROG established mussel beds in Ōkahu Bay. We thought you'd be interested to know how they are doing. The project to place 60 tonnes of mussels

(around 4.2m individuals) into Ōkahu Bay was a couple of years in the planning and was very much driven by the Ngāti Whātua Ōrākei hapū's desire to improve the mauri – lifeforce, life essence or life sustaining capacity – of Ōkahu Bay. The bay is pretty paru / dirty, with a history of degradation. It was once the site of the main sewage outfall pipe for Auckland. There are still frequent stormwater overflow events. For Revive Our Gulf it was an opportunity to run a large(ish) scale test on mussel survival, comparing mussels on shell to mussels on sediment under the



Mark Helms Marine
ON-SITE SERVICE - RE-POWER - OUTBOARD SALES

No Callout Fees for all members' outboard servicing & repairs done onsite at the OBC

- 🌀 Servicing
- 🌀 Tuning
- 🌀 Maintenance
- 🌀 Repairs
- 🌀 Re-conditioning
- 🌀 Repowers
- 🌀 All outboard brands

For all enquiries please visit our website
www.markhelmsmarine.co.nz

or call
09 949 0098



Above > Scan the QR code to go to the Ōkahu Bay project page.

Right > PhD candidate Eliana Ferretti and Dr. Al Alder ready themselves for the soupy depths of Ōkahu Bay.



same conditions. The kūtai / mussels in the bay have been deployed in six beds, three on shell and three on sediment. The shell came from Ports of Auckland maintenance dredging and was deployed across a 50m x 50m area before the kūtai were put down.

Twelve months on, we are pleased to see definite signs of enhanced mauri in and around the beds. The beds have thinned out, with density of the mussels in the beds substantially lower than when they initially went in. This is to be expected as the mussels naturally clump together for survival and stability; and some will be lost through natural dislodgement and death by natural causes. Now things have stabilised somewhat - with little to no change in mussel densities from the previous (7-month) survey. Most mussels in the beds are standing upright in a healthy feeding state. The mussel size (growth) changed very little over the first year on the seafloor. Mussels have a slower growth rate when they reach adult size. Also, the conditions in the bay are sub-optimal, with lower amounts of food and more sediment, meaning the mussels have to devote more time to survival than growth. In spite of this our filter feeding friends are hanging in there!

The team observed small amounts of epibiota - organisms that live on other organisms, in this case mussels - with kelp,

sponges, and encrusting ascidians (sea squirts) identified during its survey. Two unwanted organisms, the Mediterranean fanworm and the clubbed tunicate, were observed in the reefs, but do not appear to be spreading extensively. They are found elsewhere in the area, away from the mussel beds.

Triple fins have made their home amongst the structure, and a number of 11-armed sea stars / pātangaroa have moved in to feed on the beds. Patches of crushed shell have been observed, meaning other predators like tāmure / snapper and whai / rays are also likely to be around.

At this early stage, there appears to be little discernible difference in mussel survival based on mud or shell beds. This is consistent with experience running similar tests in Marlborough.

From here we will continue to monitor progress as biodiversity builds back. Out of whack predation is a possibility. Since so many mussels have been lost in this part of the Hauraki Gulf, the restored mussels sometimes have to contend with abnormally large numbers of hungry predators. This has been the case elsewhere with sea stars laying mussel beds to waste in Ohiwa harbour. We are fully prepared to top-up the beds with more mussels if need be.

The big mystery is recruitment. How do we
...Continued on page 12



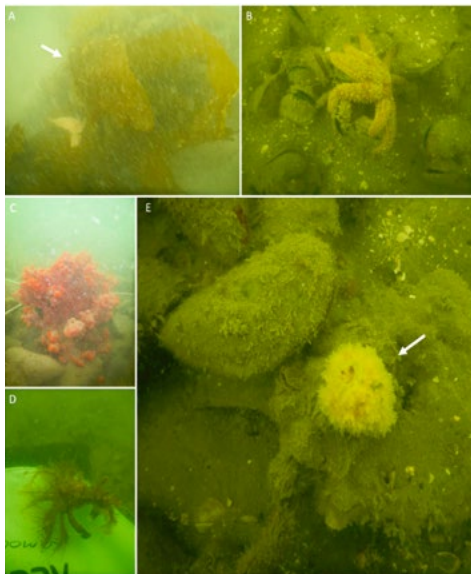
...Continued from page 11

attract that next generation of mussels into the beds? We know mussel spat is present in Ōkahu Bay. Kelly Tarlton's routinely needs to clean out its inlet pipes of mussels opportunistically feeding on the free flow of food. We suspect the spat in the bay comes from older wild mussel stock spread far and wide in the Hauraki Gulf Marine Park, and not the mussel farms. The research says farmed mussels are too young to be effective breeders. If that is the case then preserving this older, wild mussel stock is important for the future of mussel reef regeneration. So please, bear that in mind when you're next out and tempted to take wild mussels. Stick to getting your mussels from the supermarket.

Thank you to OBC members for your support of this project. A reminder to respect the Ngāti Whātua Ōrākei rāhui on the beds. No anchoring in and around the beds, no fishing above the beds and definitely no shellfish gathering!

To follow progress at Ōkahu Bay visit www.reviveourgulf.org.nz or use the QR code on page 11 to go to the Ōkahu Bay project page.

The mussel beds are located in the area shown. To avoid damage to the beds and snagging of ropes / transect lines, Ngāti Whātua Ōrākei and Revive Our Gulf ask that you don't anchor or fish in the area.



Examples of epibiota found among mussel beds. A. Kelp (*Ecklonia radiata*) persisting despite turbid conditions. B. 11-armed sea star (*Coscinasterias muricata*). C. The sponge *Crella incrustans*. D. Graceful decorator crab (*Oregonia gracilis*). E. Sponge species (white arrow). (Pics: Dr. Al Alder)

~ SPRING ~ FISHING MEETING PLUS HARDSTAND AUCTION



WEDNESDAY FEBRUARY 22

DOORS OPEN AT 7:00PM

BAR OPEN / \$2 SAUSAGE SIZZLE



FROM 8.30PM

**AUCTION
PROCEEDS GO
TO AN OBC
SUPPORTED
CHARITY**

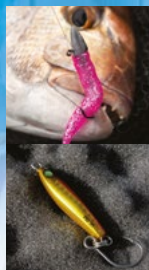
MICRO FISHING TIPS AND TECHNIQUES

Fishy Business TV show host Adam Clancey will talk about targeting fish using exciting techniques with micro lures and ultra light tackle.

Adam will also be happy to answer any fishy questions and demonstrate knots and rigs.

This is a fishing meeting you won't want to miss out on.

**FISHING MEETING
STARTS 7:30PM**



LIMITED SPACE RSVP AT: WWW.OBC.CO.NZ/SOCIAL/EVENTS

THE FAMOUS OBC



Boat Convoy CRUISE AND LUNCH



AT THE RIVERHEAD

SUNDAY 12th FEBRUARY, 2023

Take your loved ones (and friends) on a wonderful convoy cruise from the OBC to The Riverhead. There you'll sit and enjoy lunch and a drink with fellow OBC members. Order lunch on arrival. Secure your space now. Non-member family and friends welcome to join. Even if the 'boat convoy' is cancelled due to weather, the marquee is reserved for registered OBC members. We will travel by car.

HIGH TIDE: 1246HRS – 2.99M

LOW TIDE: 1845HRS – 0.8M

VESSELS IN WATER: 1000HRS

DEPART CLUB: 1030HRS

**MEMBERS BRIEFING: 1015HRS
(AT CLUBROOMS)**

**SUGGESTED DEPARTURE
FROM RIVERHEAD: 1500HRS**



PRE-REGISTRATION REQUIRED BY SUNDAY 5 FEBRUARY, 2023

Register through the website at

www.obc.co.nz/socal/events/riverhead-cruise.aspx

Summertime REMINDERS

Improving weather means more activity around the Club. To ensure a safe and enjoyable experience, we have a friendly reminder of key 'Operational Rules'...

SAFETY

- Speed limit on site is 20kph.
- Watch out for little ones around wash bays and boat prep areas.
- Launching ramps get cleaned regularly but they still can become slippery.
- Tractors may only be operated by members who have completed the OBC tractor training course.
- Treat the electrical perimeter fence as always being 'live'.
- Report any site hazards to duty staff.



ONSITE VEHICLE PARKING

- Site congestion can increase safety risks, parking regulations are actively enforced.
- Guests must push the buzzer to gain entry to the grounds and fill in a parking permit at the office. Parking is restricted to the grass area adjacent to the entry gate. Please note there is no guarantee of guest parking being available on any given day.
- **YELLOW** line tarmac parking is allocated (and numbered) to permanent



hardstand members who must always park back in their allocated spot.

- Marina parking on the rock wall is for MBLH's and Berth Renters - **STRICTLY NO VISITOR PARKING** - MBLH's and Berth Renters please note this is also your responsibility.
- Spaces between the trees along the railway line are allocated to permanent hardstand occupiers, numbered and denoted by 'R' yellow tag.
- Early morning departing fishos wishing to take out guests need to arrange a parking pass for them.

WASH DOWN BAYS

- The Club supports environmentally friendly practices and encourages the use of biodegradable cleaning products such as 'SALT AWAY'.
- On busy days to avoid congestion around the ramps a washing time of 5 minutes should be sufficient.
- It is recommended that you supply your own hose fittings as they tend to go missing faster than Operations can replace them.



...Continued on page 16

...Continued from page 15



SECURITY

Over summer there is a noticeable increase in boats coming and going and with this comes the need for increased vigilance and security.

On no account will a boat be allowed to depart through the gates without the corresponding member access card being used. Security staff have received clear instructions on this requirement. Members must not use their card to assist someone else to circumvent this requirement as this is easily tracked. The message, therefore, is, "Don't leave home without your access card".

- Ensure your access card is not attached to or marked with OBC identification.
- Members are responsible for their guest/s' behaviour on Club grounds.
- OBC's Liquor License does not allow BYO. Alcohol can only be consumed within the clubhouse during bar opening hours, or on board a private marina vessel.
- No tailgating through the gate.

FILLETING STATION

Please separate your heads, frames and offal properly! Any offal put in the other bins creates cross-contamination and means the entire bin of fish goes to waste. These fish parts are feeding people and helping the community, please treat these parts as if you were feeding your own family.

There is a CCTV camera installed in the station. If you witness an occurrence, or find the station left in a mess, let us know date/time and Operations will review camera footage. Offenders will be taken to task. Skippers, you are responsible for your guests so please make sure they are aware of the requirements.

RUBBISH

Coming home after a day out on the boat, we understand you are tired but your cooperation is gratefully appreciated when it comes to disposing of your rubbish.



- No fish or bait leftovers in the rubbish bins – use the appropriate filleting station bins.
- The small black bins located adjacent to all the marina piers are for the flushing of small auxiliary outboards - they are not rubbish bins.
- Four large rubbish bins are conveniently located around the site. No 'household' rubbish please.

ORIGINS

A few common expressions that have their origins in the marine world:

SCUTTLEBUTT: The scuttlebutt is a drinking water cask or container on a ship. Throughout history, sailors would often gather around the scuttlebutt to engage in conversation so the word has also taken on a slang meaning that refers to rumor or gossip.

CAT GOT YOUR TONGUE?: The English Navy used a whip called 'Cat-o'-nine-tails' for flogging. The pain was so severe that it caused the victim to stay quiet for a long time. (Or it could derive from ancient Egypt, where liars' and blasphemers' tongues were cut out and fed to the cats!)

TURN A BLIND EYE: Admiral Horatio Nelson had one blind eye. Once when the British forces signaled for him to stop attacking a fleet of Danish ships, he held up a telescope to his blind eye and said, "I do not see the signal." He attacked and was victorious.

An invitation to
spend more time
at sea.



BENETEAU



Meet the new Beneteau Antares 8 | One available now for \$269,995
High-spec cruising package powered by a 250HP 4-stroke outboard

**B FAMILY
BOATS**



www.familyboats.co.nz

EMERGENCY CLOSURE of COROMANDEL FISHERY

The two remaining open areas in the Coromandel scallop fishery have closed following new information showing scallops are in decline.

Oceans and Fisheries Minister David Parker has invoked emergency measures to close the fisheries. "This kind of measure is rarely used, and I do not invoke it lightly as it bypasses public consultation. I consider that in this case, given the seriousness of the situation, it is necessary to protect these scallop beds and ensure the recovery of the wider fishery," says Minister Parker.

"I have put an emergency measure in place now, because there can be more fishing in the summer season, which may place further pressure on the beds.

"While the effects from fishing will have played a part, it is very likely there are other factors driving the decline including sedimentation from land activities, water quality, and environmental conditions likely linked to climate change."

The closure took effect as of Friday December 16, and prohibits all scallop fishing in the two defined areas at Little Barrier/Te Hauturu-o-Toi and Colville channel. It will be in place for three months and includes commercial, recreational, and customary fishing.

The Coromandel scallop fishery is being fully reviewed, with a longer term closure proposed, as part of Fisheries New Zealand's regular sustainability reviews for the 1 April fishing year. Consultation on proposals began on Thursday December 15.

A copy of the Minister's release can be viewed at www.beehive.govt.nz/release/serious-scallop-decline-prompts-emergency-closure-coromandel-fishery



Kōparepare
Together, restoring our oceans.



Twilight
Fishing
Series

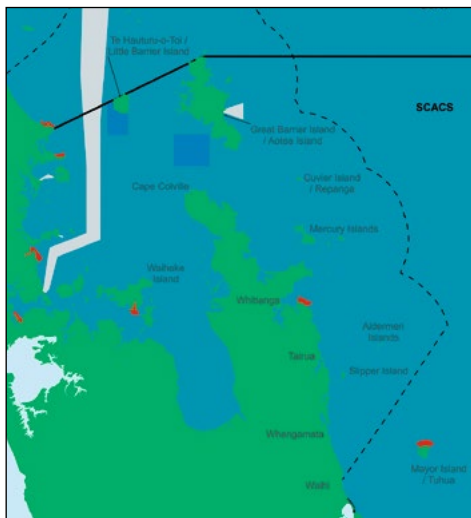
WEDNESDAY EVENINGS
DURING FEBRUARY
AND MARCH 2023

Email your best catch photo through to
events@obc.co.nz at the end of each evening

Great prizes to be won
at the end of the series!



BAR OPEN | BBQ FROM 5.00PM



The recently closed areas are indicated by light blue squares.

TRAILERMAN to RETIRE

You may notice the absence this month of a very long-running Outboarder advertisement. Tony Cullen has decided it's time to lay down the tools and retire, and is closing his Cullen Equipment Specialist business at the end of March.

Tony was advertising in the Outboarder when Advance Publishing Ltd took over the magazine production in 1998 and has been a loyal supporter of the magazine and the Club for more than 25 years. During his long association with the OBC, Tony has helped hundreds of members with their boat trailers, be it giving advice, undertaking maintenance and repairs, or custom building new trailers. He has valued the support he has received in return, and the countless word-of-mouth recommendations so important to any business.

Tony's friendly, helpful attitude, knowledge and capability will be missed by all those who



Tony Cullen is closing the doors of his Cullen Equipment Specialist workshop at the end of March. (Debbie Jarvis pic)

have utilised his services.

While Tony is likely to keep his hand in with the trailer work, albeit well scaled back, he's looking forward to spending more time on his other interests, including crewing for Speedway driver Michael Pickens, something he's been doing for 14 seasons and counting.

We wish Tony all the best for his retirement.

Put your boat in the hands of Auckland's marine electrical specialists.



Visit our new Tamaki Marine Park Branch with undercover facilities for trailer boats!



MARINE SYSTEMS



POWER GENERATION



ANCHOR, WINDLASS & WINCHES



SMART SYSTEMS



EWOF

HMB
Marine Electrical

TAMAKI MARINE PARK
Unit 3, 36 Gabador Place
Mt Wellington

0508 462 462 / info@hmbe.co.nz / www.hmbe.co.nz

THE BOATYARD
Unit 3, 50 Argo Drive
Half Moon Bay



MARINE
WORKS



FAMILY FISHING

Competition

FUNDRAISER FOR
AUCKLAND RESCUE
HELICOPTER TRUST



LOTS OF PRIZES
TO BE WON!

SATURDAY 11 MARCH

2023

RAINDATE SUNDAY 12 MARCH

ADULTS \$40

KIDS \$15
(4-14 YRS)

ENTRIES CLOSE SUNDAY 5 MARCH 2023 (LATE ENTRIES WILL NOT BE ACCEPTED)

THIS EVENT IS FOR EVERYONE - OBC MEM

**OVER \$5000
OF MERCURY
OUTBOARDS
TO BE WON!**

SPONSORED BY



LENGTH PRIZE CATEGORIES

RANDOM DRAWS

- Lucky Anglers
- 1 x Early Bird
- 1 x ARHT Donation Only
- 1 x Lucky lady
- 1 x Best picture
of the day

ADULTS

- Adults Kahawai
1st – 3rd
- Adults Kingfish
1st – 3rd
- Adults Snapper
1st – 3rd

KIDS

- Kids Other Species
1st – 3rd
- Kids Kahawai
1st – 3rd
- Kids Snapper
1st – 3rd

visit our website www.obc.co.nz to register

OR GRAB A FORM FROM THE OFFICE

EARLYBIRD ENTRY PRIZE ENTRIES CLOSE SUNDAY 12 FEBRUARY 2023

BERS BRING YOUR FAMILY AND FRIENDS

From Adam Clancey

FLASHY FISHING

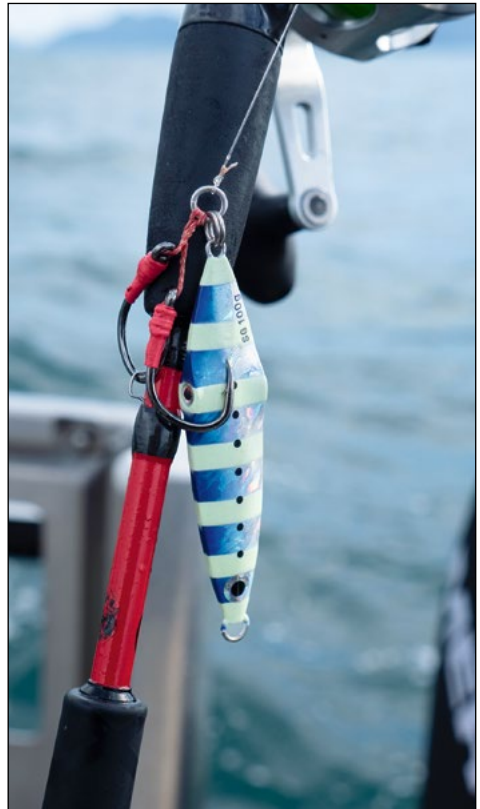
Inshore lure fishing for yellowtail kingfish is some of the best sport fishing available in New Zealand for many reasons. Kingies are great fighters that will always challenge an angler. They are available to all inshore anglers, even those in small boats and kayaks - this makes kingies the fish that any angler can target. The biggest factor, however, is that although at times kingfish will take lures freely, at other times they will follow a lure and shy away from striking, or show total irreverence for any piece of hardware that you chuck at them. This leaves you questioning the merit of the lure you are using, and your angling ability. Fortunately there are many different tips, techniques and lure options that can turn irreverence into smashing strikes and burnt thumbs.

The biggest part of any fishing mission is finding the fish, and this couldn't be more true when lure fishing for kingfish. In this day and age, with the quality and advanced technology of marine electronics available even for small boats, the guessing game is greatly reduced, making it easy to find a good general area. Look for structure, current and food, and chances are you will find kingfish. Think environmental elements: like the side of the rock that has the most disturbed water; the direction that current is flowing; or where the baitfish are holding. Kingfish do show up all year, the warmer months are definitely the time to target them on inshore grounds.

Popular kingfish lures can be categorised



Large kingfish feed inshore over summer.



Jigs work well when kingfish are hanging deep.

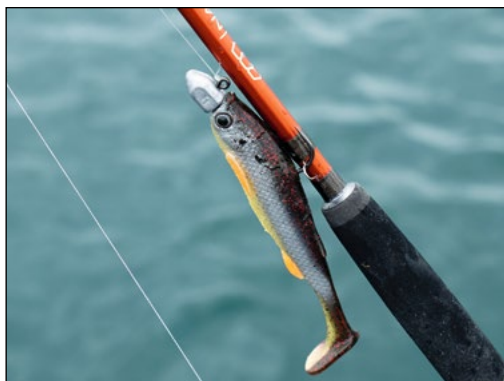
into three main types - trolling, jugging and casting. The trick is to choose the right lure for the way the kingfish are feeding. This can involve split second changes in lures. Following are some common scenarios that would require different lure types and techniques: If the kingies are busting the surface in a large area of open water chasing large bait fish, a pattern of bibbed trolling minnows would be very effective and give you the mobility to chase the school as they boil up. If kingfish were chasing large mullet into the shallows and smashing into the baitfish, a large popper placed right in the middle of the action would be a great choice. Alternatively, if the kingies were chasing piper, casting a smaller slim popper would be more likely to work.

Many times, kingfish are present in an area but are not feeding on the surface. When a situation like this arises, metal jugs dropped into the area where the fish are is likely to invoke a strike. Again, lure size can play a big part in this. High speed spinning with jugs works really well on kingfish, as when it is hard to get a strike the faster action lures definitely get a better response. This technique involves using a 60-100gram jug. Cast and let sink for a few seconds and then retrieve as fast as you can until it is skipping on the surface. Soft baits and slow jugs also have their place in lure fishing for kingfish. Shad-type soft baits and larger curly tails seem to be particularly effective when fished in an erratic motion. If you are using soft baits make sure you use jig heads and hooks that are capable of handling large kingfish. Some of the worm style hooks and cheaper lead head jugs are just not up to the job.

When inshore lure fishing for kingfish



Kingfish will hang around most kinds of structure.



Big paddle-tailed softbaits work wonders. This is a Nano Matrix TT jig head and Savage T Fat Tail.

you will, at times, encounter school or rat kingies in abundance. These fish are extremely sporty and put up a good account of themselves, but remember the legal size for kingfish is 75cm, which is a pretty decent size fish.

Follow Adam Clancey on Facebook: www.facebook.com/FishyBusinessTV

Boat Fix New Zealand

LIMITED

0800 BOAT FIX

Insurance work specialists

Pre-purchase inspections

Fibreglass repairs

Engine servicing

Timber alterations & repairs

Canopy & upholstery repairs

Antifouling & Gelcoat work

Trailer W.O.F & repairs

Spraypainting & Jetski repairs

Inflatable repairs

AUCKLAND'S SPECIALIST BOAT REPAIR CENTRE



Recognised member



www.boatrepairs.co.nz

58 Diana Drive, Glenfield



LEGASEA
FISH FOR THE PEOPLE



IKA RAUORA

RESCUE FISH

THE FUTURE OF THE GULF STARTS WITH YOU

Summer is an excellent time to refresh, take a break, and look into the future of the Hauraki Gulf Marine Park.

There is a growing awareness that we collectively need to be doing more to protect and enhance the waters of the Marine Park. So it's unfortunate that Government plans for the future management of the Park include maintaining areas for trawling and dredging, the biggest culprits in degrading our precious seafloor habitats and vulnerable species.

It was only five years ago that advocates with polarising views collaborated in the same room, forming agreeable solutions to develop the multi-level Sea Change plan aimed at restoring the health of the Marine Park.

So what happened?

The Sea Change plan has been picked apart, even though it was made clear to officials that it was a hard-won package deal with no cherry-picking.

Instead, the 2021 Government-led Revitalising the Gulf strategy sees one lot of officials consulting on a Fisheries Plan, and another group promoting 19 marine protected areas. And no synergy between either process.

Fisheries New Zealand has been managing a divide and conquer Fisheries Plan process - no communication is allowed between groups nor sharing of meeting documents.



The original Sea Change plan provided methods to remove bottom trawling. As a whitewash, officials now propose 'solutions' such as permanent trawl corridors, but the locations of these corridors are not being shared with group participants.

It's no wonder some stakeholders feel justifiably frustrated and betrayed at the lack of meaningful talk and progress.

The proposed Fisheries Plan does not go far enough to address restoring the health of the Gulf marine environment.

An independent poll commissioned by the Hauraki Gulf Forum in 2021 found that 84 percent of Park users want destructive bottom-contact fishing methods such as bottom trawling banned from the Marine Park.

The Outboard Boating Club is committed to advocating for meaningful solutions as a member of the Hauraki Gulf Alliance.

The Alliance is pushing to remove bottom trawling, scallop dredging, and Danish seining from the Marine Park. Individual members can be part of the Alliance too - show your support by heading to haurakigulfalliance.nz/petition/



WEIGHTY MATTERS

Congratulations to two OBC/WBSFC Club members who each hooked a notable fish over the Christmas period.

GEORGE CALDWELL - PORAE

On December 23, at Channel Island, while fishing with mates on the vessel 'Chief', George Caldwell caught a magnificent porae after a tense 15 minute battle. Skipper Riley Lawler thought it was a good-sized fish for the line weight of 13.6kg.

We are currently trying to establish if it is in fact a New Zealand line weight record. It was a good fish and just illustrates that anglers should bring their catches in for weighing if they are potential record holders.

Even if not a record-setter, you should still photograph your catch on an official



George's porae's vital statistics were 4.126kg, 49cm girth and 60cm length.

measure. There are a number of competitions running throughout the year, and you have to be in to win.

COLIN JONES - MARLIN

Colin Jones launched at Little Huia early on the morning of Sunday January 7, and proceeded to cross the Manukau Bar and head out. He dropped his lures in at the 100m mark and continued, solo, out to the 200m area, pulling five lures.

Conditions were good and at the 185m mark Colin saw a large bait ball about 30m deep. A few passes and he was soon onto a good marlin. After 30 minutes he had it to the boat, and tagged it, estimating its weight at around 85kg. Colin tried to release the fish but it was unable to be revived, so he landed it. Arriving at OBC at about 5.00pm, the marlin was hoisted up on the gantry and Colin was surprised to see the weight come in at 106.5kg. A splendid solo effort.

Colin was then able to dress the fish at the Kai Ika filleting station, the bench being the perfect size for the 2400mm long striped marlin. A great effort Colin.



Colin Jones's marlin weighed in at 106.5kg.

OBC PRESENTS

Cruise

to



MAN O' WAR

WAIHEKE ISLAND
NEW ZEALAND WINE

New date!

**SATURDAY
18th MARCH**



Enjoy a delicious lunch and relaxed afternoon

If you would like to convoy over to Waiheke with us meet at OBC at 11.15am ready for a 11:30am departure, arriving at Man O' War Bay by 13:00. Otherwise meet at Man O' War at 13:00, table will be booked under OBC/Jess.

*Drinks and food to be purchased at the Vineyard at your own expense.
(No food/drinks to be taken from boat to Vineyard).
Please be accountable for your own tabs.*

**BRING PLENTY OF SUNSCREEN AND SUN HATS!
REMEMBER TO BE A RESPONSIBLE SKIPPER AT ALL TIMES,
OBC TAKES NO LIABILITY.**

Man o War Bay - High tide 4.51pm 2.66 m, low tide 10.57am 0.59 m

**We need final numbers to give the vineyard by Friday 10th March.
Contact events@obc.co.nz to book your spaces.**

EXECUTIVE COMMITTEE REPORT

Highlights of the Executive Committee Meeting held November 29, 2022, with eight Committee members present.

COMMODORE'S REPORT

The Commodore's report had been circulated and was taken as read.

The report highlighted four major cost centres on the horizon:

- Hardstand parking and drainage \$7.5 million
- Clubhouse replacement \$4.0 million
- Hakumau fencing \$0.5 million
- Club Marina (refurbishment) \$1.0 million

TOTAL \$13.0 million The Club has a \$6.1 million reserve.

A sub-committee has been formed to review the above and advise the Executive Committee.

HEALTH AND SAFETY

No incidents or accidents to report. GM's health and safety report accepted as read.

FINANCIALS

The OBC financial reports for the month ended October 31, 2022 were taken as read, no questions arising.

MOVED: That the OBC Financial Reports for the month ended October 31, 2022 as presented and circulated be approved.

ALLEN/COCHRANE CARRIED

MOVED: That the Whakatakataka Bay Marina Financial Reports for the month ended October 31, 2022 as presented and circulated be approved.

BATKIN/DAVIS CARRIED

- It is important to have accurate Cash Flow projections as we have a large number of term deposits coming up



SEABOSS
BOATS

With 20 years experience SEABOSS BOATS have developed a range of seven standard sizes, customised and finished to your specification

31 Fairy Springs Road, Rotorua
Email: office@seaboss.co.nz
Phone 07 348 4997
0800 95 95 90

Thompson Marine
Home of Seaboss Boats

 **MERCURY**
www.seaboss.co.nz

for renewal in the next few months.

MOVED: That the Term Deposits maturing in December and January be loaded onto our call account.

MCGARRY/BATKIN CARRIED

OPERATIONS REPORT

The report was circulated and taken as read. Meeting discussion:

- Stage 1 of the Marina Refurbishment Contract will start on December 5.
- 3x new Marina walkways have arrived on site to replace B, C and D
- We have engaged with HEB's arborist concerning the new fencing to the Haku-mau Reserve.
- Lithium Ion batteries - Phil Davenport is consulting with other marinas to look at how these are to be treated. Also speaking to our insurance provider.
- Marina insurance - further protocols have been put in place regarding our maintenance programme for the Marina. More regular reports required from Shorewise.

EXECUTIVE SUB-COMMITTEE REPORTS

PROPERTY AND PLANNING: Resource Consent hopefully nearing approval with Auckland Council.

MARKETING, PROMOTIONS AND EVENTS: Jess's report accepted as read. Burnsco was held and sadly OBC lost the trophy to Hibiscus Coast Sport Fishing Club by a small margin. Kids Christmas party has 140 kids registered. Man o' War lunch has 43 registered participants

- Kids summer fishing series December to February 28. Fully sponsored by Family Boats,
- Adult fishing series Wednesday afternoons. Bar open, food available.

MARINA MANAGEMENT COMMITTEE:

The Minutes of the November meeting had not been received. Refurbishment had started and progress appeared good.

MEMBERSHIP

New members: 15

Resignations: 36 (note: 8 moving out of Auckland)

Total membership 21/11/22: 1835 actual members

MARINA BERTH TRANSFERS

nil

GENERAL BUSINESS

- Piles to Ngapiipi reef: Phil Davenport is negotiating with HEB's for the pile install.
- Motuihe Island restoration: Letter received from John Laurence seeking assistance from Club members for this great project.

Meeting concluded 8.36pm.

NEXT MEETING: THURSDAY FEBRUARY 23

OBC members are welcome to attend Executive Committee meetings at 7.00pm, and may address the Committee on any one specific topic until 7.15pm. Outside of this time, members may be present as observers but cannot speak to any subjects raised.

**Mobile Auto &
MARINE ELECTRICAL**
limited

WE SERVICE: AUCKLAND-WIDE

OUR SPECIALTIES ARE:

**INSTALLATION SERVICE
BOATS - TRAILERS
WATER PUMPS
FAULT SCANNING
A.B.S - AIR BAGS
DUAL BATTERY SYSTEM
STARTER MOTORS
ALTERNATORS
AIR CONDITIONING**

YOUR CONTACT IS STEVE
Advance Trade Certified - 40 years Industry Experience

0800 662 352
(0800 MOB ELC)

HOOK A PRIZE

Not all fishing competitions are limited to one day, or one weekend. In fact, the OBC has several long-term fishing competitions running right now, as well as a few shorter ones.

Every legal catch has the potential to win prizes, so even when you're catching and releasing, make sure to get a photo of your fish on an official measure (assuming it fits on the measure, of course), or if it's a big game fish that you've landed, weigh it in.

Check out the details of the following competitions - there's something for all ages - and get your next catch entered for a chance to win some awesome prizes.

Kids' Summer Fishing Tournament

Ends February 28, 2023

Family Boats has generously sponsored the fantastic prizes for this summer catch and release fishing comp exclusively for OBC members' kids ages 16-years and under. Any fish species qualifies, so get

OBC AUCKLAND & **FAMILY BOATS** PRESENT

Kids' Summer Fishing Tournament

1st DECEMBER 2022 UNTIL 28th FEBRUARY 2023

CATCH AND RELEASE

PRIZES FOR THE LONGEST 3 FISH CAUGHT, OF ANY SPECIES.
Send your picture/s to events@obc.co.nz.
Make sure to take a picture of the fish on the measure, along with a picture of the child and fish, as photos will be shared. Open to Club members' children only, aged 16 and under.

FANTASTIC PRIZES FROM FAMILY BOATS

1ST - INTERMEDIATE SKI SET
2ND - BOATING AND OUTDOORS KIDS NEOPRENE VEST
3RD - YAMAHA GRAB BAG

OVER \$700 OF PRIZES TO BE WON, ALL SPONSORED BY FAMILY BOATS

FAMILY BOATS

your entries in - the longest three fish will win a prize. How do you enter? Snap a photo of the fish on an official measure, and another photo of the child with the fish. Then email the photos to events@obc.co.nz Please note, photos may be printed in the Outboarder, and/or shared on OBC social media. You can find more information about the OBC and Family Boats Kids' Summer Fishing Tournament below left.

Twilight Fishing Series **Wednesdays, February 8 to** **March 29, 2023**

We couldn't make this one any easier - no registration required, no commitment to participate on every date, and all you need to do to qualify is email through a photo of your best catch of the day.

Jump aboard your mobile office from late afternoon into early evening and enjoy a spot of fishing, then head back to the Club where the bar will be open and barbeque food will be available to buy.

Send your fish photo/s through to events@obc.co.nz to be in with a chance of winning a prize at the end of the series. If we get some decent fish coming through, there will even be spot prizes each night. Open to all members and you're welcome to bring a crew along.

OBC and Marine Works Family Fishing Competition **March 11, 2023**

This one-day competition sure packs a punch. It's open to all OBC members and their families, and friends are welcome, too. Head out for a day's fishing, upload your catch photos, and return to the OBC for the afternoon prize-giving. There's a massive prize pool, including more than \$5000 worth of Mercury outboards courtesy of Marine Works. Catch categories and prizes for all

ages, random draws, auctions, entertainment, food and more. And the event supports the Auckland Rescue Helicopter Trust. What more do you need to know? Turn to pages 20 and 21 of this issue to find out. Earlybird entry (there's a prize for that, too!) closes on February 12, so get your entries in.

Seaboss Boats Longest Snapper Competition **Ends May 21, 2023**

There's a good chunk of cash up for grabs with this one. Enter the longest snapper and you'll walk away with \$200. But that's not all. Even if you don't think you'll be in with a chance of winning the longest catch prize, get your entry in anyway. One entry drawn randomly from all entries received during the course of the competition will score \$400. That's got to be worth giving it a shot!

Photo entries for this competition need to be uploaded to the web to qualify, you can find all the details on page 33. Remember that all entries also qualify for the annual OBC fishing trophies.

Bill Fish and Tuna El Dorado **Ends June 30, 2023**

Presented by the Whakatakataka Bay Sport Fishing Club (WBSFC) and exclusively for WBSFC members - any OBC member is welcome to join the WBSFC. Competition entry is free, which is pretty darn impressive when you consider there's a total of \$2000 prize money being split between qualifying game fish. It's a New Zealand-wide comp, but bill fish must be weighed on the OBC gantry. For tuna only, a photo of fish on scales will be an acceptable alternative. Need to know more? Email wbsfc@obc.co.nz or check out last month's Outboarder magazine (page 30).



Mango and Prawn SALAD

A tropical delight to kick off your next dinner party! (Recipe serves 4)

INGREDIENTS

- 1 clove garlic, crushed
- 1 tbs chilli sauce
- 2 tbs olive oil
- 4 tbs lime juice
- 1/4 cup chopped fresh mint
- 4 cups mixed salad leaves
- 1/2 telegraph cucumber
- 1 red capsicum, sliced
- 1-2 avocados, peeled and sliced
- 2 large mangoes, peeled and sliced
- 16 cooked king prawns, peeled with tails left attached
- Freshly ground pepper

DIRECTIONS

1. Combine the garlic, chilli sauce, oil, lime juice and mint in a small jug. Stir well.
2. Rinse the salad leaves lightly in cool water, then shake or spin dry. Blot any excess moisture with a paper towel.
3. Slice the cucumber, leaving the skin on. Combine cucumber, capsicum, avocado, mango, prawns and salad leaves in a large bowl, add the dressing and toss well.
4. Pile the salad onto individual serving plates. Season with freshly ground pepper to taste and serve immediately.



RENNIE|COX
LAWYERS

OUR SERVICES INCLUDE:

PERSONAL - COMMERCIAL - COMMON LAW
FAMILY - PROPERTY - FINANCING

WHAT WE OFFER:

- Long tradition of performance and reliability
- Quality of service and practical advice
- Promptness and efficiency
- Reasonable fees and regular reporting
- Home visits to sick and elderly

Level 15, 126 Vincent Street, Auckland, New Zealand
P O Box 6647, Victoria Street West, Auckland 1142, New Zealand

Ph 09-303 4089 Fax 09-307 6499
email: lawyers@renniecox.co.nz



VISIT THE OBC ONLINE:

WWW.OBC.CO.NZ

WWW.FACEBOOK.COM/OUTBOARDBOATINGCLUB

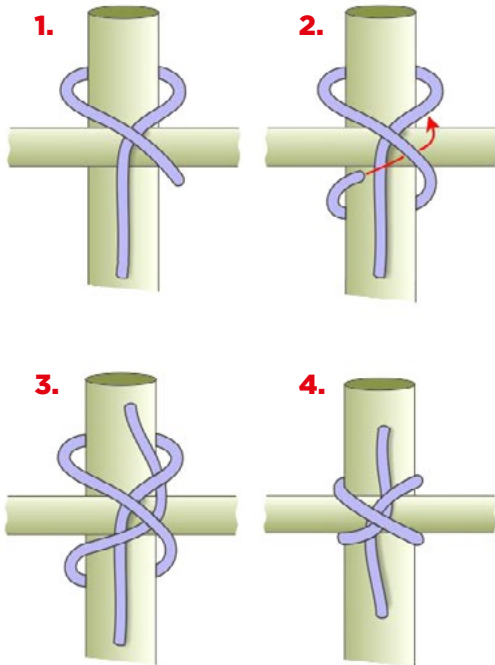


What Knot

TRANSOM KNOT

Similar to the constrictor knot, this is a lashing knot used to fix together crossed pieces of rigid material at right angles to each other. Can be used as a permanent knot (trim off the ends), and to reinforce, simply tie a second transom knot on the opposite side at a right angle to the first.

1. Pass the working end behind the upright spar and back across the rope.
2. Now pass the working end behind the upright spar below the horizontal spar.
3. Working back towards the top, tuck the working end under both turns.
4. Pull both the working end and the standing part to tighten the knot.



1st June 2022 - 31st May 2023

SEABOSS BOATS 

2022-2023 **Longest Snapper** COMPETITION

Be in to win!

\$200 FOR LONGEST SNAPPER

\$400 ONE DRAWN RANDOMLY FROM ALL ENTRANTS THROUGHOUT THE YEAR

WINNERS ARE OBC CLUB MEMBERS (AND FAMILY MEMBERS) ONLY

How To Enter: 1) REGISTER YOUR DETAILS HERE [HTTPS://OBC.FISHINGCOMP.CO.NZ/](https://obc.fishingcomp.co.nz/)
2) READ THE RULES [HTTPS://OBC.FISHINGCOMP.CO.NZ/RULES/](https://obc.fishingcomp.co.nz/rules/) 3) MAKE SURE YOU HAVE ONE OF THE OFFICIAL MEASURES ON YOUR VESSEL (AS SHOWN IN THE RULES). AVAILABLE FOR PURCHASE IN OBC OFFICE FOR \$20.
4) GET FISHING, THEN ENTER YOUR CATCH! [HTTPS://OBC.FISHINGCOMP.CO.NZ/ENTER-CATCH/](https://obc.fishingcomp.co.nz/enter-catch/)



365-DAY BOATING

Text By *Barry Thompson*

The Paragon 31 is as tough as it looks and has the seakeeping abilities to match. It's a walk-around wheelhouse boat with attitude.

Paragon isn't a brand that is that familiar in New Zealand. They are built in Sweden and are part of the well-known Nimbus Boat Group. When the owner of this particular Paragon 31 approached the importer, Sports Marine, he required a serious commuter boat. Hence the very clinical layout of the saloon is a little overwhelming with six huge chairs. If this is too much, a four-seat version is available, leaving the rear space in the wheelhouse for a small galley or extra seating.

The six or four-seater versions will not be for everyone, so Paragon has a far more conservative and somewhat traditional layout that kiwis will find more relatable. The saloon sees a couple of bucket seats forward, with an extra seat and galley unit to starboard, and L shape settee to port. This provides a more relaxing atmosphere and transforms the harsh commuter aspect into a comfortable and roomy pleasure mode.

What remains the same in all models is the starboard side helm, the pair of sliding doors to the bulwarks and a sizeable rear sliding door. The side doors are a great

feature, giving you instant access to the side decks should you go forward for an anchoring issue or when laying up in a berth or jetty. Being a boat built primarily for boating in extreme Scandinavian weather conditions, the Paragon 31 comes with a diesel heater. Another plus for making this a year-around boat.

The Paragon 31 has an open cockpit with no moulded transom, so you need to ensure that, before you head out of the marina, all the shoes and gear are off the cockpit floor. There are lockers on either side for storage, and if you want to stow wet dive gear or your day's catch, the Paragon 31 comes with a wet locker on the boarding platform.

On the starboard side of the boarding platform, is a extra large drop-down stainless step ladder which is a plus for divers.

I could go on and on about the seakeeping and how the boat tackles the rougher sea, but when you know that the hull is based on an ultra-deep vee with 24.5 degrees at the transom, you can understand why. The beam is 3.38m, with broad flat chines and three deep spray rails each side doing a lot of the work. A solid rubber belting around the hull also helps deflect the spray and doubles as your in-built fender.

While driving the boat, there is excellent

visibility from the helm with a split curved vertical window, complete with four wipers. The helm seat is fully adjustable, and you feel the air suspension seat's benefits when running in rough water.

Power options offered are a single Volvo Penta D6-400 or D6-440, or if you want more speed, you can upgrade to twin D4-300 or D4-320 Aquamatics. With a pair of D4 320s, I recorded 40.3 knots at 3700 rpm. Maximum fuel burn was 142 lph, but that dropped right back to 84 lph at 3000rpm and 28.2 knots. If you are happy to cruise around 20 knots then the fuel burn is going to be closer to 50 lph for both engines. Reasonably economical boating I would suggest.

The Paragon 31 is a single-cabin, three berth boat. The main cabin area features twin 2m berths that can be transformed into a single 2sqm berth with the aid of an infill. Storage is plentiful under the berths and in side lockers. Light and ventilation comes via a single hull port, concealed and flush lighting, plus a large overhead hatch.

The third berth slips in under the port side of the wheelhouse sole and, when not used for accommodation, is a great storage space.

The rest of the space downstairs is taken up by a vanity with storage under or a compact galley to port and bathroom opposite. The optional galley comes with all you need to prepare small meals - a sink unit, a three-burner cooktop neatly concealed under a foldaway bench top, and drawer storage and a fridge below.

The generous size of the bathroom surprised me. You can stand up to shower with a flexible shower rose.



There is plenty of space to fit all your electronics and controls with everything at a nice eye and hand level.

The forward-thinking Scandinavian design and attention to detail are not lost on this brand.

With clean lines, multiple deck layouts and built with hardwearing materials, the Paragon 31 is purpose-built tough and ready for whatever you throw at it. The availability of different interior layouts makes it even more appealing. It combines clean modern lines, a sporty performance, and excellent seaworthiness. Certainly a boat that offers 365 days a year boating capability.

SPECIFICATIONS

Model:	Paragon 31 Cabin
LOA:	10.59m
Beam:	3.38m
Draft:	1.18m
Deadrise:	24.5 deg
Displacement:	5600kg
Fuel capacity:	700 litres
Water capacity:	200 litres
Power:	2x Volvo Penta D4-320 Aquamatic DPI

MANUFACTURER

www.sportsmarine.co.nz

100% UNASHAMEDLY
DEVOTED
AND DEDICATED TO
POWER BOATING
AND EVERYTHING
ABOUT THEM !!



READ ABOUT ONLY
WHAT YOU ARE
INTERESTED IN -
NO YACHTING, NO
KAYAKING, NO ROCK
FISHING!
100% POWER
BOATING

SUBSCRIBE TODAY AT

www.PowerboatMagazine.co.nz

EVENTS NOTICEBOARD

The OBC is pleased to offer these events for your entertainment and enjoyment:

WEDNESDAY FEBRUARY 1

OBC Members Morning Tea

From 10.00am on the first Wednesday of each month, join fellow Club members at the clubhouse for a cuppa and nibbles.

WEDNESDAY FEBRUARY 8, 15, 22

OBC Twilight Fishing Series

Head out for a late afternoon fish, then back to the Club for a barbeque and refreshments from 5.00pm. More details on pages 18 and 31.

THURSDAY FEBRUARY 9

OBC Quiz Night

The next instalment of this popular interactive and entertaining quiz night is just ahead. Round up a team, join the fun and maybe win a prize. See page 4 for more information.

SUNDAY FEBRUARY 12

OBC Riverhead Cruise

You'll find everything you need to know on page 14. Get your registration in by Sunday February 5 to ensure you don't miss out.

WEDNESDAY FEBRUARY 22

OBC Fishing Meeting/Hardstand Auction

Adam Clancey, host of Fishy Business TV, will be on hand with plenty of tips and tricks to help you catch that whopper. Once Adam's presentation is done you'll have another chance to catch a whopper - an OBC hardstand of your very own for 12 months will be up for auction (funds raised will go to a marine-based charity). Page 13 has all the info.

FRIDAY FEBRUARY 24, MARCH 31

Fish 'n' Chip Fridays

Bring the family down to the Club for a feed - \$8 per portion. Kitchen serving from 5.30pm to 7.30pm, bar will also be open.

WEDNESDAY MARCH 1

OBC Members' Morning Tea

WEDNESDAY MARCH 1, 8, 15, 22, 29

OBC Twilight Fishing Series

As per previous listing.

SATURDAY MARCH 11

OBC & Marine Works Family Fishing Competition

Earlybird entries close Sunday February 12, so get your entry in pronto to be in the running for the earlybird prize! With more than \$5000 worth of Mercury outboards to be won thanks to Marine Works, and a raft of other prizes, this is one competition you don't want to miss.

SATURDAY MARCH 18

NEW DATE: Man O' War Vineyard Lunch

The weather put paid to this event in November, so we're trying again in March. Details on page 27. Maximum of 50 people, so get your registration in quickly via the OBC website.

SUNDAY MARCH 26

OBC Kids Fishing Competition

A great opportunity to get your youngsters involved in fishing, nice and close to home - they'll be fishing in the OBC Marina! Registration details coming soon.

SUNDAY APRIL 30

Little Creatures Brewery cruise and lunch

An early heads-up for what is sure to be a fully subscribed OBC event. Head to the OBC website for details.

OTHER EVENTS/ ROAD CLOSURES

Sunday February 5 - Chelsea Swim. Be alert for swimmers in the water between Masfield Beach and Chelsea Sugar Factory, in the morning.

Saturday February 11 - Bean Rock Swim. Swimmers in the water between Mission Bay Beach and Bean Rock Lighthouse, 10.00am to 1.30pm.

Dates and events are subject to change. Please read weekly email newsletter in case of last minute event cancellation... or alternatively phone the OBC to confirm. If you are able to assist with any OBC event, please contact the office on 522 0774, email events@obc.co.nz



FEBRUARY 2023

SUNDAY	MONDAY	TUESDAY	WEDNESDAY	THURSDAY	FRIDAY	SATURDAY
			1 0456/1714 OBC MEMBERS MORNING TEA 1000HRS OBC FLARE DEMO 1900HRS	2 0555/1811	3 0649/1905	4 0737/1956
5 0821/2041 Orakei Basin flushing out 8.30pm	6 0901/2122	7 0938/2200 Orakei Basin flushing in 10.38am 3.1m	8 1015/2237 OBC TWILIGHT FISHING SERIES STARTS	9 1051/2313 OBC QUIZ NIGHT 1830HRS	10 1128/2350	11 1206
12 0029/1246 OBC RIVERHEAD CRUISE 1000HRS FFC EARLY-BIRD ENTRY CLOSES	13 0111/1330	14 0200/1418 OBC NEW MEMBERS NIGHT 1800HRS	15 0256/1512 OBC TWILIGHT FISHING SERIES	16 0401/1614 OUTBOARDER DEADLINE	17 0509/1722	18 0614/1831
19 0714/1935 Orakei Basin flushing out 8.30pm	20 0810/2033	21 0903/2127 OBC MARINA MGMT COMM MEETING 1600HRS Orakei Basin flushing in 10.03am 3.6m	22 0954/2218 OBC TWILIGHT FISHING SERIES OBC FISHING MEETING/HARDSTAND AUCTION 1900HRS	23 1043/2307 OBC EXECUTIVE COMMITTEE MEETING 1915HRS	24 1132/2354 OBC FISH 'N' CHIP FRIDAY 1730HRS	25 1221
26 0042/1309	27 0131/1358	28 0223/1448 OBC KIDS SUMMER FISHING TOURNAMENT ENDS				

Please read weekly email newsletter in case of last minute event cancellation... or alternatively phone the OBC to confirm. If you are able to assist with any OBC event, please contact the office on 522 0774, email events@obc.co.nz



LAUGH LINES

Q: What sharks would you find at a construction site?

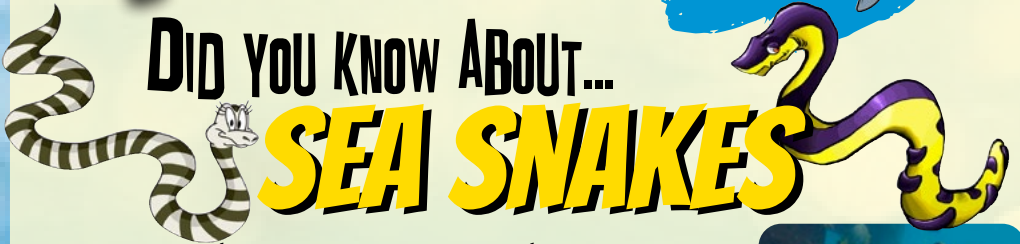
A: Hammerhead sharks.



Sprat Chat

DID YOU KNOW ABOUT...

SEA SNAKES



Sea snakes are the most poisonous snakes in the world. Fortunately, they are not aggressive, and so far there have been no reports of anyone in New Zealand being bitten by a sea snake. The yellow-bellied sea snake is the one most commonly spotted in New Zealand waters - and even then, according to DoC there are only 6-10 sightings per year. They prefer warmer waters. New Zealand is also visited by sea kraits - such as the one spotted in the Viaduct harbour late last year. The difference between sea snakes and sea kraits, is that kraits spend part of their time on land, coming ashore to drink fresh water and to lay their eggs.



Despite being rarely sighted, sea snakes and kraits are considered a native species, so it's illegal to kill, harass or possess one. If you do spot a sea snake or krait, call 0800 DOC HOT to report it.

ONLY ONE!

Can you find which sea creature only appears once in this pic?
Look carefully!



Kids' Summer Fishing Tournament

The OBC Kids' Summer Fishing Tournament is still running - but only until the end of this



month. So whenever you're out fishing during February, get a photo of you with your catch before you release it, and email the photo to events@obc.co.nz

There are some cool prizes thanks to Family Boats up for grabs, so get your entries in! More information on page 30.

HOW MANY WORDS?

How many words can you make from the letters in

OCEAN

ANSWER: canoe, acne, aeon, came, cone, once, ace, are, can, con, eon, nae, oca, one, ae, an, en, na, ne, no, oe, on



CLASSIFIEDS

The free marine related classified ads page is a service for OBC members only. Other private individuals are welcome to advertise in the Outboarder but you will be charged - please email shirley@petrolhead.co.nz for advertising rates.

ADS WILL ONLY APPEAR FOR THREE MONTHS UNLESS RENEWED.

Please phone Shirley on 263 5305 or email ad to shirley@petrolhead.co.nz

Please note - advertisements will appear as space permits.

FOR SALE/RENT

3.9M RIB inflatable, ex demo, with 50hp Mercury o/b, on a trailer. Centre console, fibreglass hull, built-in fuel tank, bilge pump and more. \$18,000. Ph (021)030 9964

8M MARKLINE EXPRESS launch with Suzuki 250hp outboard. On B pier. In regular use, everything in good working order. Sleeps 5. Capable of 30knt, cruises 22knt. \$29,000 obo. Berth available to rent also. Call Chris a/h (027)490 6081. No SMS please

10.5M MARINA BERTH B13. Great sheltered position, avail to rent long term. Fenders, shore power and water located on berth. \$650/month. Ph Joe (027)302 1197

12M BERTH G26, avail for rent \$800/month, or would trade up to a 14m berth with cash adjustment. Ph Allan (021)764 744

12M MARINA for rent. E30. Suit catamaran. \$750/month. Ph Peter (021)937 335

12M MARINA for rent \$800/month. E26. Avail now. Ph Mike (027)448 1771

12M MARINA for sale. G24 Pier. Great location. Contact Chris, chris@venture-exports.co.nz or ph (021)896 323

12M MARINA C23. Great position near toilet block, fuel jetty and clubhouse. Long term \$750/month. Contact Neville, ph (021) 585 448, or email nevtree@gmail.com

2007 HAINES Signature 550 C, Yamaha 115 v4 2-stroke. 400 hours. VHF radio, fish finder, compass. \$32,500. Ph Paul (021)230 5612

BUCAANEER 605 EXCESS. We have had this boat for 8 years. Well

maintained Suzuki 140 4 stroke, new trailer two years ago. Perfect family boat - not too big, not too small. \$65k - For further details please call Richard (027)274 0191

GENESIS Euro 320, Volvo KAD42 230hp diesel, one owner 25 years, \$110,000ono. View on OBC marina G02, marina rental available. Ph Tricia (021)968 862

MARINA BERTH 10.5m, pier F, for short term rent. Avail now until April 7, 2023. Ph Warren Stephens (027)240 6525

MARINA BERTH D26, avail for at least 12 months. Rent \$750/month. Ph Ray (021)492 914

MOORING 10.5m for sale/rent off Sullivan's Beach Paihia. \$9200 or \$150/month Contact Eddie (021)754 732 or bigted@orcon.net.nz

MOORING for rent in Whakatakata Bay W0042. Just been inspected. Perfect for 9m boat. Ph (09)627 9478

SWING MOORING for rent. \$50 per week, Whakatakata Bay. Up to 12m boat. In deepest channel. Ph (027)686 8302

WANTED

10.5M OBC MARINA BERTH to buy, ph Glen Townshend (021)643 121

12M OR 14M OBC marina berth to buy. OBC member. Able to settle immediately or agree and defer up to March 2023 when new boat arrives. Ph Brad (021)228 5490

MARINA BERTH 12m or 14m, preferably to buy, by an OBC member currently renting. Ph Glenn (027)294 7551

FOR YAMAHA PORTABLES, VISIT HQ.



HAINES HUNTER HQ

09 579 9661

Haines Hunter HQ sell a huge range of 4-stroke and 2-stroke outboards from 2hp to 425hp. Our Technicians are Yamaha factory trained to the highest level and our service centre is fully equipped with Yamaha's latest special tools and diagnostic equipment.



Call 09 579 9661 | 50 Cawley St, Ellerslie

WWW.HAINESHUNTERHQ.CO.NZ